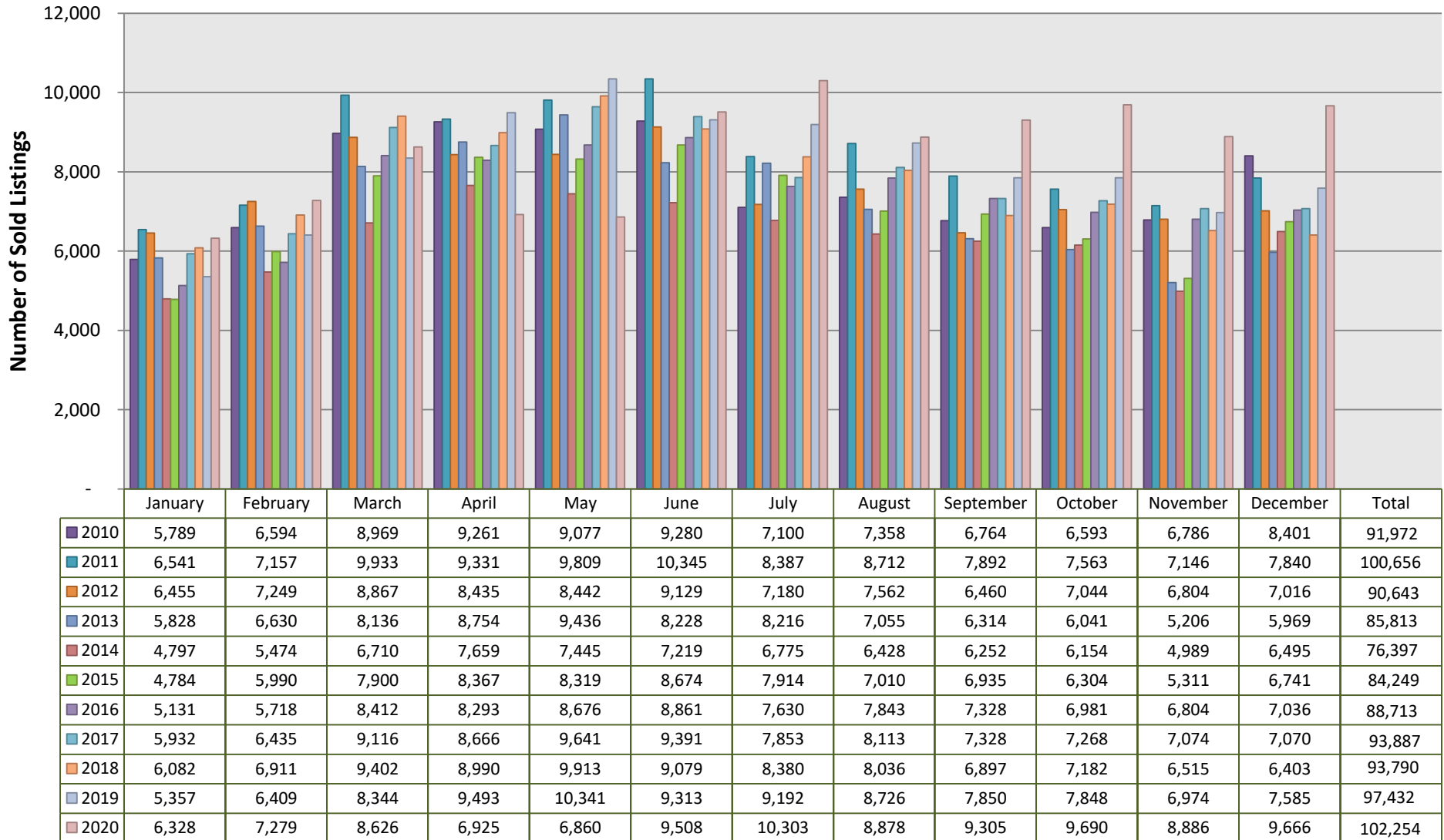
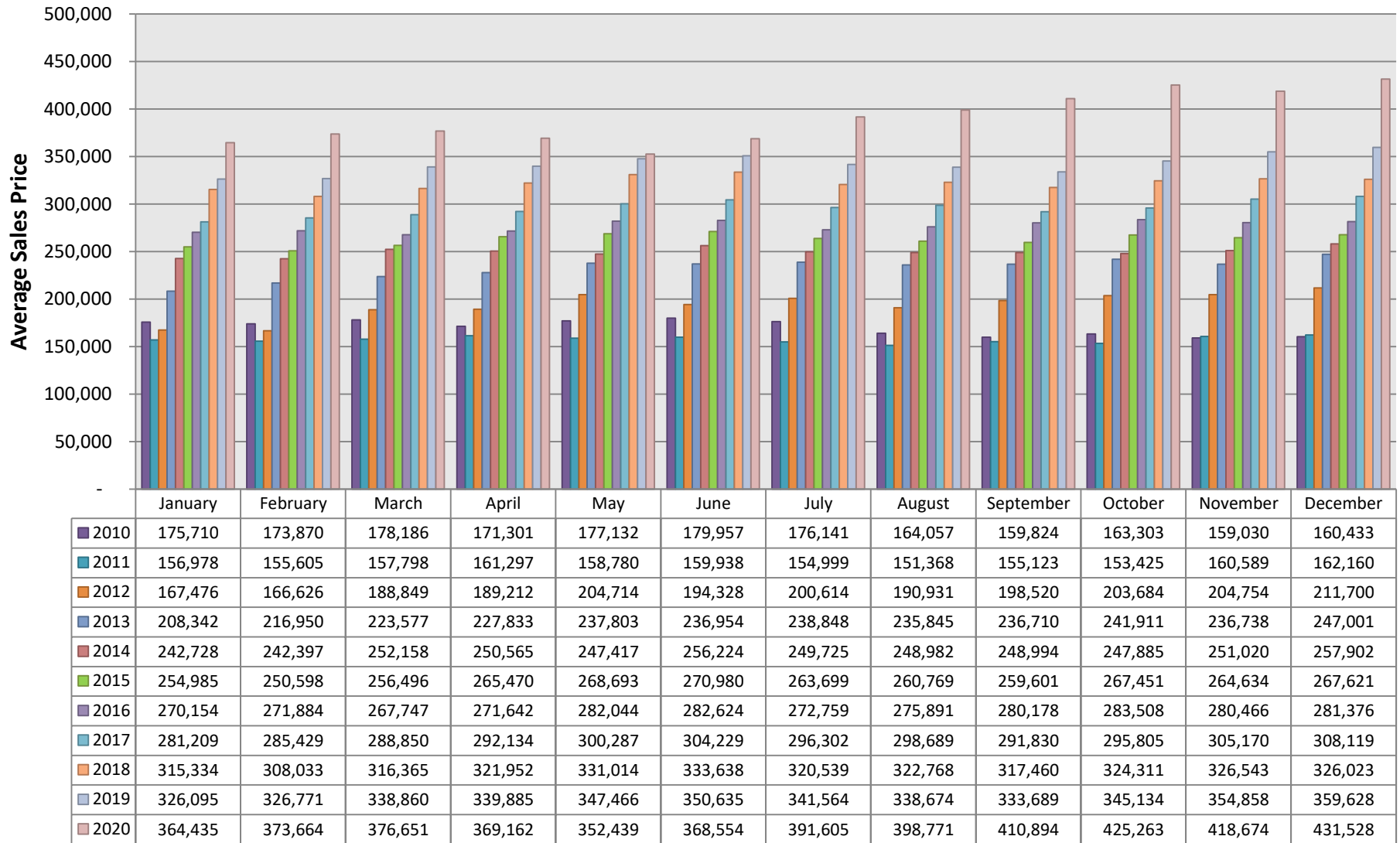


ARMLS® - Residential MLS Sales Per Month for 1/2010 to 12/2020



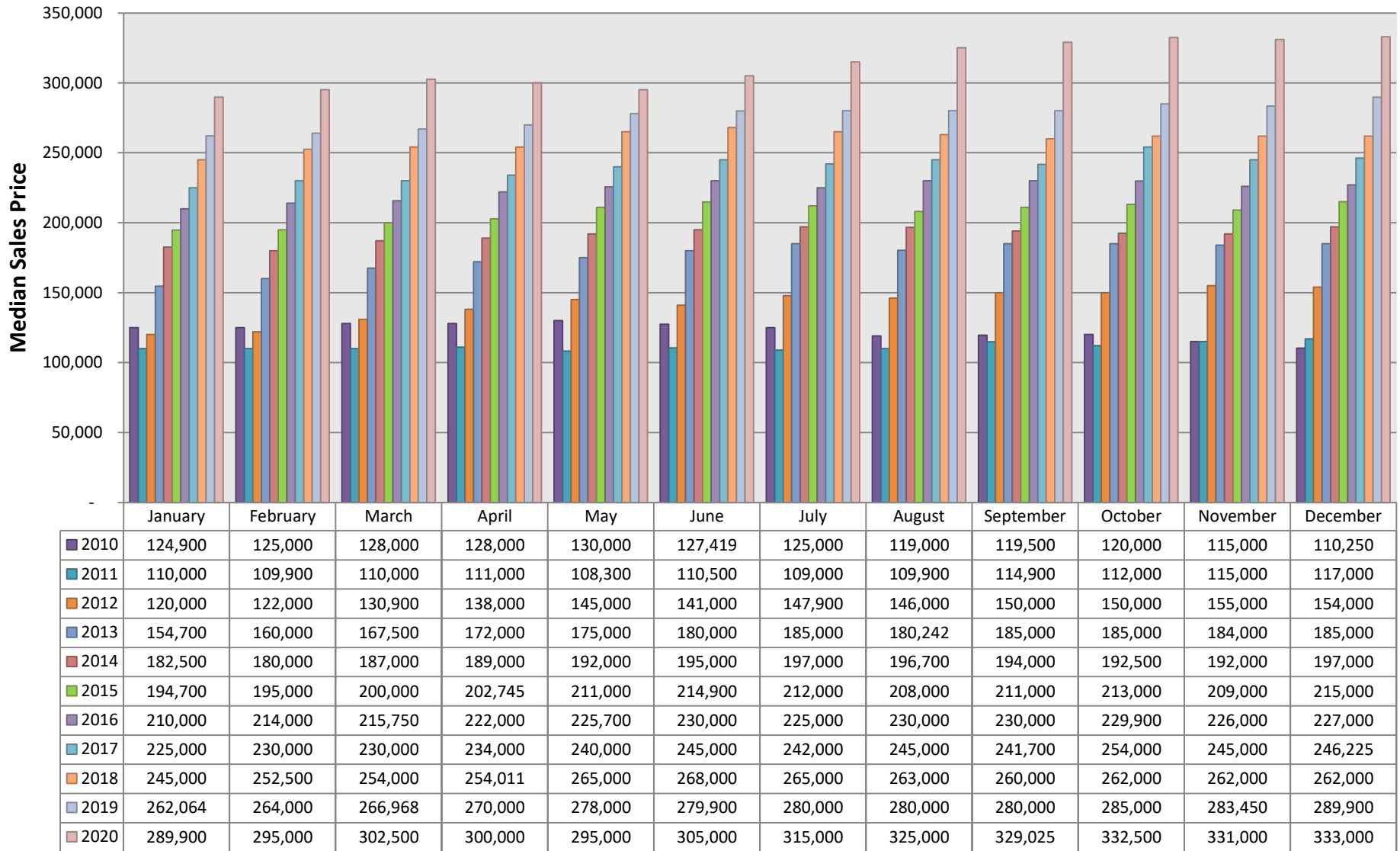
Data is of Residential Property Class 1 Sales in the MLS. This representation is based in whole or in part on the data supplied by Arizona Regional Multiple Listing Service, Inc. Copyright ARMLS 2021. ARMLS does not guarantee nor is in any way responsible for its accuracy. Data maintained by ARMLS may not reflect all real estate activity in the market.

ARMLS® - Average MLS Sales Price Per Month for 1/2010 to 12/2020



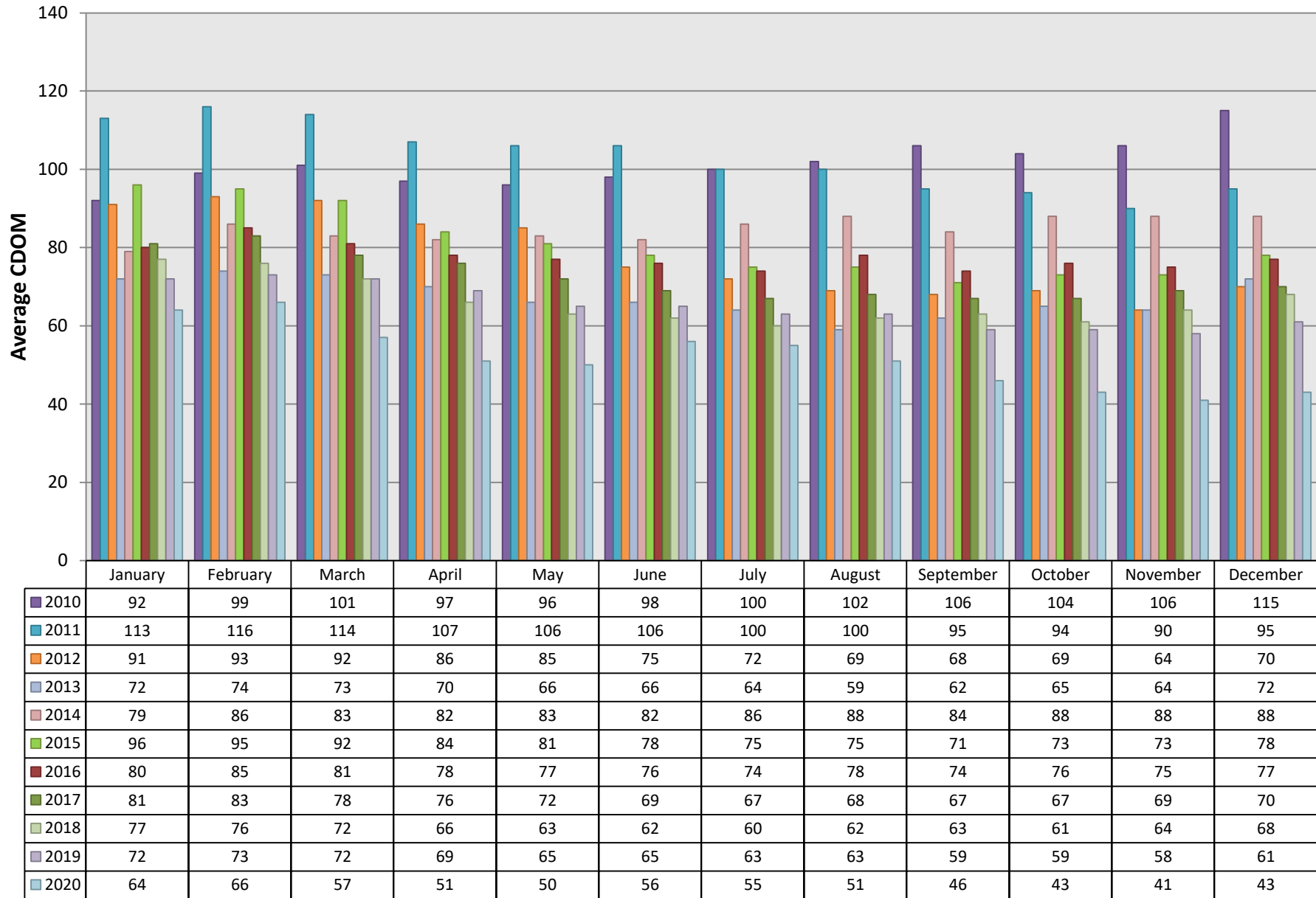
Data is of Residential Property Class 1 Sales in the MLS. This representation is based in whole or in part on the data supplied by Arizona Regional Multiple Listing Service, Inc. Copyright ARMLS 2021. ARMLS does not guarantee nor is in any way responsible for its accuracy. Data maintained by ARMLS may not reflect all real estate activity in the market.

ARMLS® - Median MLS Sales Price Per Month for 1/2010 to 12/2020



Data is of Residential Property Class 1 Sales in the MLS. This representation is based in whole or in part on the data supplied by Arizona Regional Multiple Listing Service, Inc. Copyright ARMLS 2021. ARMLS does not guarantee nor is in any way responsible for its accuracy. Data maintained by ARMLS may not reflect all real estate activity in the market.

ARMLS® - Average Cumulative Days on Market for Sold Listings for 1/2010 to 12/2020



Data is of Residential Property Class 1 Sales in the MLS. This representation is based in whole or in part on the data supplied by Arizona Regional Multiple Listing Service, Inc. Copyright ARMLS 2021. ARMLS does not guarantee nor is in any way responsible for its accuracy. Data maintained by ARMLS may not reflect all real estate activity in the market.